



Parking Local Law 2023

City of Cockburn

DRAFT

TABLE OF CONTENTS

	PAGE
Parking Local Law 2023.....	1
PART 1 - PRELIMINARY	1
1. Citation	1
2. Repeal	1
3. Commencement	1
4. Definitions & Interpretation	1
5. Application of Local Law	5
6. Vehicle and Driver Classification.....	5
7. Application and Interpretation of Signs.....	5
8. Powers of the local government.....	6
PART 2 – PARKING STATIONS	7
9. Establishment of Parking Stations	7
10. Fees for Parking Stations	7
11. Conditions of Parking in a Parking Station.....	7
12. Display of Tickets	7
13. Lost Tickets	7
14. Removal of Vehicles.....	7
15. Parking Within a Parking Space	8
16. Prohibitions on Stopping or Parking	8
17. Special Event Parking.....	8
18. Behaviour in Parking Stations	8
19. Parking Stations May be Locked	9
20. Selling and Hiring in Parking Stations.....	9
21. Authorised Spaces in Parking Stations.....	9
22. Damage to Parking Stations.....	9
23. Operation of Ticket Issuing Machines.....	9
24. Damage to Ticket Issuing Machines, infrastructure or Detection Devices	9
25. Defacing a Parking Ticket.....	9
PART 3 – PARKING ON THOROUGHFARE GENERALLY	10

26.	Stopping or Parking Contrary to Signs	10
27.	Occupied Parking Spaces	10
28.	Median Strips and Traffic Islands.....	10
29.	Parking vehicle on a carriageway.....	10
30.	When parallel and right-angled parking apply.....	11
31.	When angle parking applies.....	11
32.	Parking Near Fire Hydrant or Public Post Box.....	12
33.	Parking In a Clearway.....	12
35.	Double Parking.....	13
36.	Verge Parking.....	13
37.	Bus Stops, Intersections, Pedestrian, Railway and Children’s Crossing	13
38.	No Parking within One Hour	15
39.	Direction to Move Vehicles.....	15
40.	Stopping in a Loading Zone.....	15
41.	Stopping in a taxi zone.....	15
42.	No parking of vehicles exposed for sale and in other circumstances	15
PART 4 – STOPPING AND PARKING GENERALLY		16
43.	Parking and Stopping of Bicycles	16
44.	Authorised Parking	16
45.	Private Property.....	16
46.	Stopping heavy, commercial and other types of vehicles in built up area	16
47.	Marking of Tyres	16
48.	Parking on Public Reserves	17
49.	No Obstruction of Public Places.....	17
50.	Impounding of Vehicles	17
52.	Restrictions on parking in particular areas	17
PART 5 – RESIDENTIAL PARKING PERMITS		18
53.	Residential Parking Permit.....	18
54.	Conditions of Exemption for Residential Parking Permits	18
55.	Removal and cancellation of residential parking permit	18
PART 6 – METERED ZONES		19
56.	Determination of metered zones	19
57.	Parking fee to be paid	19

58. Limitation on parking in metered space	19
59. No parking when meter is expired.....	19
60. Suspension of requirement to pay fee	19
61. Vehicles to be within metered space.....	19
62. Permitted insertions in parking meters	19
63. Parking ticket to be clearly visible.....	20
64. One vehicle per metered space	20
65. No parking when hood on meter.....	20
PART 7 – ELECTRIC RIDEABLE DEVICE	20
66. Electric Rideable Device Areas.....	20
67. Electric Rideable Device Parking.....	20
PART 8 – MISCELLANEOUS	21
68. Affixing Signs and Notices.....	21
69. Impersonation of Authorised Person.....	21
70. No Contravention of Sign.....	21
71. Removal of Notice from Vehicle	21
72. Offence	21
73. Prescribed Offences and Modified Penalties.....	21
74. Forms	21
75. Special Purpose and Emergency Vehicles.....	21
SCHEDULE 1 – Schedule of Penalties.....	22
SCHEDULE 2 – Form 2 - Infringement Notice	26
SCHEDULE 2 – Form 3 – Infringement Notices	27
SCHEDULE 2 – Form 4 - Withdrawal of Infringement Notice	28
LOCAL GOVERNMENT ACT 1995.....	28
PARKING LOCAL LAW 2023.....	28

LOCAL GOVERNMENT ACT 1995

CITY OF COCKBURN

Parking Local Law 2023

Under the powers of the Local Government Act 1995 and under all other powers enabling it, the Council of the City of Cockburn resolved on X XXXX 2023 to make the following Local Law.

PART 1 - PRELIMINARY

1. Citation

This Local Law shall be cited as the City of Cockburn Parking Local Law 2023.

2. Repeal

The City of Cockburn Parking & Parking Facilities Local Law 2007 as published in the Government Gazette on 11 January 2008 is hereby repealed.

3. Commencement

This local law comes into operation 14 days after the date of its publication in the Government Gazette.

4. Definitions & Interpretation

(1) In this Local Law unless the context requires otherwise –

“**ACROD sticker**” has the meaning given to it by the Code;

“**Act**” means the *Local Government Act 1995*;

“**appropriate fee**” means the fee appropriate to the period for which a vehicle has been parked;

“**authorised person**” means a person authorised by the local government under section 9.10 of the Act to perform any of the functions of an authorised person under this Local Law;

“**authorised vehicle**” means a vehicle authorised by the local government or an authorised person to stand or park in an area which is designated by signs for the parking of authorised vehicles only;

“**bicycle**” has the meaning given to it by the Code;

“**bus**” has the meaning given to it by the Code;

“**caravan**” means a vehicle that is fitted or designed for human habitation and which is drawn by another vehicle, or which is capable of self-propulsion;

“**carriageway**” means a portion of a thoroughfare that is improved, designed or ordinarily used for vehicular traffic, and includes the shoulders, and areas, including embayments at the side or centre of the carriageway, used for the stopping or parking of vehicles; and where a thoroughfare has 2 or more of those portions divided by a median strip, the expression means each of those portions, separately;

“**CEO**” means the Chief Executive Officer of the local government;

“**Charging Station**” means a machine installed and used to replenish an electric vehicle’s battery while the vehicle is parked or stopped in a parking space.

“**children’s crossing**” has the meaning given to it by the Code;

“**Code**” means the Road Traffic Code 2000 (WA);

“**commercial vehicle**” means a motor vehicle constructed for the conveyance of goods or merchandise, or for the conveyance of materials used in any trade, business, industry or work whatsoever, other than a motor vehicle for the conveyance of passengers, and includes any motor vehicle that is designed primarily for the carriage of persons, but which has been fitted or adapted for the conveyance of goods, merchandise or materials;

“**cross-over**” means the portion of land which lies between the boundary of a carriageway and the adjacent property line that is constructed for the purpose of giving access to the property;

“**district**” means the district of the local government;

“**driver**” means any person driving, or in control of, a vehicle;

“**driveway**” means the portion of land which lies between the boundary of a carriageway and the adjacent property line that is constructed for the purpose of giving access to and from the property, and also includes the term cross-over;

“**electric rideable device**” has the meaning given to it by the Code;

“**electric vehicle**” means a vehicle or a class of vehicle that is propelled solely by an electric motor in lieu of an internal combustion engine.

“**electronic parking detection device**” means an electronic device placed in any position to detect or record the parking time of a vehicle on any road, parking station or other public place and includes any instruments, display panels or transmitting apparatus associated with the device.

“**emergency vehicle**” has the meaning given to it by the Code;

“**fee**” means the prescribed amount of legal tender that the local government may impose and determine from time to time for the stopping or parking of a vehicle under and in accordance with sections 6.16 to 6.19 of the Act.

“**footpath**” has the meaning given to it by the Code;

“**GVM**” (which stands for 'gross vehicle mass') has the meaning given to it by the Code;

“**heavy vehicle**” has the meaning given to it by the Code;

“**local government**” means the City of Cockburn;

“**Loading Zone**” means a parking space which is set aside for use by commercial vehicles if there is a sign referable to that space marked ‘Loading Zone’

“**median strip**” has the meaning given to it by the Code;

“**metered space**” means a section or part of a metered zone that is adjacent to a parking meter and that is marked or defined by painted lines or by metallic studs or similar devices for the purpose of indicating where a vehicle may be parked on payment of a fee or charge;

“**metered zone**” means any thoroughfare or reserve or part of any thoroughfare or reserve in which parking meters regulate the parking of vehicles;

“**motorcycle**” has the meaning given to it by the Code;

“motor vehicle” means a self-propelled vehicle that is not operated on rails; and the expression includes a trailer, semi-trailer or caravan while attached to a motor vehicle, but does not include a power assisted pedal cycle;

“occupier” has the meaning given to it by the Act;

“owner”:

- (a) where used in relation to a vehicle licensed under the Road Traffic Act, means the person in whose name the vehicle has been registered under the Road Traffic Act;
- (b) where used in relation to any other vehicle, means the person who owns, or is entitled to possession of, that vehicle; or
- (c) where used in relation to land, has the meaning given to it by the Act;

“painted island” has the meaning given to it by the Code;

“park”, in relation to a vehicle, means to permit a vehicle, whether attended or not by any person, to remain stationary except for the purpose of:

- (a) avoiding conflict with other traffic; or
- (b) complying with the provisions of any law; or
- (c) taking up or setting down persons or goods (*for a maximum of 2 minutes*);

“parking area” has the meaning given to it by the Code;

“parking facilities” includes land, buildings, shelters, ticket zones, parking spaces, parking stations, metered zones, metered spaces and other facilities open to the public generally for the parking of vehicles with or without charge and signs, notices and facilities used in connection with the parking of vehicles;

“parking region” means the whole of the district with the exception of –

- (a) the approach and departure prohibition areas of all existing and future traffic control signal installations as determined by the Commissioner of Main Roads;
- (b) prohibition areas applicable to all existing and future bridges and subways as determined by the Commissioner of Main Roads; and
- (c) any road or part of a road which comes under the control of the Commissioner of Main Roads unless the control of parking and parking facilities on that road or part of a road has been delegated by the Commissioner of Main Roads to the local government.

“parking space” means a section or part of a thoroughfare, a public reserve or a parking station, which is marked, or defined by painted lines, metallic studs, pavers or by similar devices for the purpose of indicating where a vehicle may stop or be parked;

“parking station” means any land or structure constituted as a parking station under this Local Law;

“pedestrian crossing” has the meaning given to by the Code;

“property line” means the boundary between the land comprising a thoroughfare, and the land that abuts thereon;

“public place” means any place to which the public has access whether or not that place is on private property;

“public reserve” means any land –

- (a) which belongs to the local government;
- (b) of which the local government is the management body under the *Land Administration Act 1997*; or
- (c) which is an “otherwise unvested facility” within section 3.53 of the Act;

“Road Traffic Act” means the Road Traffic Act 1974;

“Schedule” means a Schedule to this Local Law;

“**school zone**” has the meaning given to by the Code;

“**sign**” means a traffic sign, mark, structure, inscription, road marking, symbol or device placed, marked or erected on or near a thoroughfare, a parking station, a parking facility or a public reserve for the purpose of prohibiting, regulating, guiding or directing the stopping or parking of vehicles;

“**special purpose vehicle**” has the meaning given to it by the Code;

“**stop**” in relation to a vehicle means to stop a vehicle and permit it to remain stationary, except for the purposes of avoiding conflict with other traffic or of complying with the provisions of any law;

“**verge**” means that portion of a thoroughfare which lies between the boundary of a carriageway and the adjacent property line, but does not include a footpath;

“**symbol**” includes any symbol specified by Australian Standard 1742.1- 2003 and any symbol specified from time by time by Standards Australia for use in the regulation of parking;

“**taxi**” has the meaning given to by the *Taxi Act 1994*;

“**taxi zone**” has the meaning given to it by the Code;

“**thoroughfare**” has the meaning given to it by the Act;

“**ticket issuing machine**” means a machine which –

- (a) is operated by the insertion of money or such other form of payment as may be permitted to be made; and
- (b) issues tickets to indicate the period during which it is lawful to remain parked in a parking space to which the machine is referable;

“**tractor**” means

- (a) a prime mover type motor vehicle that is a tractive unit designed for hauling a semi-trailer; or
- (b) a motor vehicle designed for use primarily in public and private sector industry, including but not limited to agricultural, earthmoving and forestry pursuits;

“**traffic island**” has the meaning given to it by the Code;

“**trailer**” means a vehicle without motive power of its own, designed for attachment to a motor vehicle for the purpose of being towed, but does not include a semi-trailer or caravan;

“**vehicle**” has the meaning given to it by the Road Traffic (Administration) Act 2008;

- (a) In this Local Law, unless the context requires otherwise, a reference to a thoroughfare, parking station, parking facility or public reserve includes a reference to, as the case may be, any part of the thoroughfare, parking station, parking facility or public reserve.
- (b) A reference to the wording of any sign in this Local Law shall also be deemed to be a reference to the corresponding symbol.
- (c) Unless the context otherwise requires, where a term is used, but not defined, in this Local Law, and that term is defined in the Road Traffic Act or in the Code, then the term shall have the meaning given to it in that Act or the Code.

5. Application of Local Law

- (1) Subject to sub-clause (2) this Local Law applies to the parking region
- (2) This Local Law does not apply to a parking facility which is not occupied by the City, unless the City and the owner or the occupier of that facility have agreed in writing that this Local Law will apply to that facility.
- (3) The agreement referred to in sub-clause (2) may be made on such terms and conditions as the parties may agree.
- (4) Subject to subclause (2), this local law applies to any parking facility or parking station approved by the Local Government.
- (5) The provisions of Parts 2 to 7 do not apply to a bicycle parked at a bicycle rail or bicycle rack.

6. Vehicle and Driver Classification

- (1) For the purpose of this Local Law vehicles are divided into the following classes –
 - (a) buses;
 - (b) caravans;
 - (c) electric vehicles;
 - (d) electric rideable device;
 - (e) motorcycles and bicycles;
 - (f) taxis;
 - (g) commercial vehicles;
 - (h) tractors;
 - (i) heavy vehicles; and
 - (j) all other vehicles not otherwise classified.
- (2) For the purpose of this Local Law, drivers are divided into the following classes –
 - (a) authorised persons;
 - (b) employees of the City;
 - (c) customers or patrons of a shop, shopping centre, facility or event;
 - (d) persons who work in a shop or shopping centre; and
 - (e) all other persons not otherwise classified.

7. Application and Interpretation of Signs

- (1) Where the stopping or parking of vehicles in a thoroughfare is regulated by a sign, then the sign shall for the purposes of this Local Law apply to that part of the thoroughfare which –
 - (a) lies beyond the sign;
 - (b) lies between the sign and the next sign beyond that sign; and
 - (c) is on that side of the thoroughfare nearest to the sign.
- (2) For the purposes of this Local Law a sign may prohibit or regulate parking or stopping by the use of any symbol.
- (3) A sign regulating the parking or stopping of vehicles is presumed to be, in the absence of evidence to the contrary, a sign placed, marked or erected under the authority of this Local Law.
- (4) An inscription or symbol on a sign operates and has effect according to its tenor, and where the inscription or symbol relates to the stopping of vehicles, it shall be deemed for the purposes of this Local Law to operate and have effect as if it also related to the parking of vehicles.
- (5) A sign that:
 - (a) was erected by the local government or the Commissioner of Main Roads prior to the coming into operation of this Local Law; and
 - (b) relates to the parking of vehicles within the parking region, shall be deemed for the purposes of this Local Law to have been erected by the local government under the authority of this Local Law.

8. Powers of the local government

The local government may, by resolution, prohibit or regulate by signs or otherwise, the stopping or parking of any vehicle or any class of vehicles in any part of the parking region but must do so consistently with the provisions of this local law.

DRAFT

PART 2 – PARKING STATIONS

9. Establishment of Parking Stations

- (1) The local government may by resolution constitute any land or structure as a parking station by signs, metered spaces or metered zones.
- (2) In relation to a parking station, the local government may determine –
 - (a) the location of parking spaces within a parking station;
 - (b) the permitted times and conditions of parking or stopping a vehicle;
 - (c) the classes of vehicles permitted to park or stop;
 - (d) the classes of person permitted to park or stop a vehicle; and
 - (e) the manner of parking or stopping a vehicle.

10. Fees for Parking Stations

- (1) The local government may impose and determine a fee for the stopping or parking of a vehicle in a parking station under and in accordance with sections 6.16 to 6.19 of the Act.
- (2) A reference in this Part to a “fee” means a fee imposed in accordance with sub-clause (1).

11. Conditions of Parking in a Parking Station

- (1) A person shall not park or stop a vehicle or permit a vehicle to remain parked or stopped in any parking station during any period for which a fee is payable unless –
 - (a) in the case of a parking station having an attendant on duty, the person pays the appropriate fee when demanded; or
 - (b) in the case of a parking station equipped with a ticket issuing machine, the person –
 - (i) inserts the appropriate fee in the ticket issuing machine or makes such other permitted form of payment which is indicated on the machine; and
 - (ii) obtains a parking ticket from the machine.
- (2) The local government may by resolution declare that sub-clause (1) shall not apply during periods or days specified.

12. Display of Tickets

A person shall not stop or park a vehicle in a parking station equipped with a ticket issuing machine during any period for which a fee is payable unless an unexpired parking ticket applicable to that parking station is –

- (a) displayed inside the vehicle; and
- (b) displayed so that the date, expiry time and the number (if any) on the ticket are clearly visible to and able to be read by an authorised person from outside the vehicle, at all times while the vehicle remains stopped or parked in the parking station.

13. Lost Tickets

If provision is made in any parking station for payment of a fee on the departure of a vehicle, and the ticket issued when a vehicle entered the parking station is not produced on the departure of the vehicle, the fee payable shall be calculated from the time the parking station was opened on that day to the time of the departure of the vehicle.

14. Removal of Vehicles

A person shall not remove a vehicle which has been parked in a parking station until the appropriate fee is paid.

15. Parking Within a Parking Space

- (1) A person shall not stop or park a vehicle in a parking station, other than wholly within a parking space.
- (2) A person shall not park in a parking station against the flow of traffic.

16. Prohibitions on Stopping or Parking

- (1) A person shall not stop a vehicle in any part of a parking station –
 - (a) if the stopping of a vehicle in that part is prohibited by a sign; or
 - (b) during a period in which the stopping or parking of vehicles in that part is prohibited by a sign.
- (2) A person shall not park a vehicle in any part of a parking station –
 - (a) if the parking of vehicles on that part is prohibited by a sign;
 - (b) during a period in which the parking of vehicles on that part is prohibited by a sign;
 - (c) if a sign specifies that the part is for the parking of vehicles:
 - (i) of a different class;
 - (ii) or driven by a person of a different class.
 - (d) for more than the maximum time specified by a sign; or
 - (e) so as to obstruct an entrance to, or an exit from, a parking station, or an access way within the parking station.

17. Special Event Parking

- (1) The local government may by use of signs set aside, for any period specified on the signs, any parking station for the parking of vehicles by persons attending a special event.
- (2) A person shall not park or stop a vehicle in a parking station set aside under sub-clause (1) during the period for which it is set aside, unless a ticket purchased from the City with respect to the special event is displayed inside the vehicle and is clearly visible to and able to be read by an authorised person from outside the vehicle.
- (3) For the purpose of this clause, “special event” means any event or occurrence considered by the local government to be special or likely to attract a substantial number of persons driving vehicles, and which has been the subject of local public notice no less than twenty-eight days prior to the first day of the event or occurrence.
- (4) During the period referred to in sub-clause (1) the provisions of clauses 16(1)(b) and 16(2)(b) & (d) shall not apply to the parking station.

18. Behaviour in Parking Stations

A person shall not:

- (a) remain in or on a parking station after having been directed to leave that parking station by an authorised person;
- (b) permit a vehicle to park on any part of a parking station, if an authorised person directs the driver of such vehicle to move the vehicle;
- (c) drive in a parking station in a direction other than the direction indicated by signs or road markings;
- (d) Conduct any business activity in a parking station without approval of the local government;
- (e) sleep in a vehicle in a parking station; or

- (f) intentionally cause a vehicle's tyres to lose traction in a parking station causing the vehicle to make excessive noise or smoke.

19. Parking Stations May be Locked

At the expiration of the hours of operation of a parking station, the local government, whether or not any vehicle remains parked in a parking station, may lock the parking station or otherwise prevent the movement of any vehicle within, to or from it.

20. Selling and Hiring in Parking Stations

No person shall at or on any part of a parking station undertake busking, sell, hire, give away, offer or expose for sale or hire anything of any nature, unless that person has the prior written permission of the local government to do so.

21. Authorised Spaces in Parking Stations

- (1) The local government may, by use of signs, set aside any parking station or any parking space or spaces in a parking station for the parking of vehicles by persons authorised by the local government.
- (2) Where the local government authorises a person pursuant to sub-clause (1) the local government –
 - (a) shall issue a written permit to the person; and
 - (b) may revoke the permit at any time.
- (3) A person shall not park or stop a vehicle in a parking space set aside under this clause unless a permit issued with respect to the vehicle is displayed inside the vehicle and is clearly visible to and readable by any authorised person examining the permit from outside the vehicle.
- (4) The local government may charge a fee for parking permits located within a parking station.

22. Damage to Parking Stations

A person shall not remove, damage, deface, misuse or interfere with any part of a parking station or parking facility, or attempt to do so.

23. Operation of Ticket Issuing Machines

- (1) A person shall not operate or attempt to operate a ticket issuing machine except in accordance with the operating instructions appearing on the ticket issuing machine.
- (2) A person shall not insert or cause to be inserted or attempt to insert into a ticket issuing machine anything other than the money which is appropriate for the machine, or such other permitted form of payment which is indicated on the machine.

24. Damage to Ticket Issuing Machines, infrastructure or Detection Devices

- (1) A person shall not remove, damage, deface, misuse or interfere with any ticket issuing machine or attempt to do any such act.
- (2) A person shall not interfere with, damage or obstruct the operation of any electronic parking detection device, infrastructure or instrument in any parking station, carriageway or in any other place.
- (3) A person shall not interfere with, damage or obstruct the operation of any display panels or transmitting equipment in relation to any electronic parking detection devices or instruments operated by the local government.
- (4) A person shall not interfere with, damage or obstruct the operation of any charging station in any parking station, carriageway or in any other place.

25. Defacing a Parking Ticket

A person shall not display in a vehicle a ticket purchased from a ticket issuing machine, or from any other place authorised by the local government, if the ticket has been altered, added to or defaced in any way in an attempt to avoid payment of the appropriate fee.

PART 3 – PARKING ON THOROUGHFARE GENERALLY

26. Stopping or Parking Contrary to Signs

- (1) A person shall not stop or park a vehicle on a thoroughfare, or portion of a thoroughfare –
- (a) if it is set apart by a sign for the stopping or parking of vehicles of a different class;
 - (b) if it is set apart by a sign for the stopping or parking of vehicles by persons of a different class;
 - (c) during any period when the stopping or parking of vehicles is prohibited by a sign;
 - (d) to which a 'no stopping' sign applies;
 - (e) to which a 'no parking' sign applies, unless the driver –
 - (i) is dropping off, or picking up, passengers or goods;
 - (ii) does not leave the vehicle unattended; and
 - (iii) completes the dropping off, or picking up, of the passengers or goods within 2 minutes of stopping and drives on.
- 'unattended', in relation to a vehicle, means that the driver has left the vehicle so that the driver is more than 3 metres from the closest point of the vehicle.
- (f) the side of which is marked with a continuous yellow edge line; or
 - (g) other than wholly within a parking space if the part of the thoroughfare upon which the vehicle is standing or parked is provided with parking spaces.
- (2) A person shall not stop or park a vehicle on any part of a thoroughfare, whether or not that part is marked as a parking space, for more than the maximum time specified by a sign.

27. Occupied Parking Spaces

A person shall not stop or park or attempt to stop or park a vehicle in a parking space in which another vehicle is stopped or parked.

28. Median Strips and Traffic Islands

- (1) Subject to any law relating to intersections with traffic control signals, a person shall not stop or park a vehicle on any part of a thoroughfare so that any portion of the vehicle is –
- (a) on a median strip;
 - (b) on a painted island;
 - (c) adjacent to a median strip otherwise than in a parking space; or
 - (d) within 9.0 metres of any portion of a carriageway bounded on one or both sides by a traffic island.

29. Parking vehicle on a carriageway

- (1) A person parking a vehicle on a carriageway other than in a parking space shall park:
- (a) in the case of a two-way carriageway, so that it is as near as practicable to and parallel with, the left boundary of the carriageway and headed in the direction of the movement of traffic on the side of the thoroughfare on which the vehicle is parked;
 - (b) in the case of a one-way carriageway, so that it is as near as practicable to and parallel with either boundary of the carriageway and headed in the direction of the movement of traffic on the side of the thoroughfare on which the vehicle is parked;
 - (c) so that at least 3 metres of the width of the carriageway lies between the vehicle and the farther boundary of the carriageway, or any continuous line or median strip, or between the vehicle and a vehicle parked on the farther side of the carriageway;

(d) so that the front and the rear of the vehicle respectively are not less than 1 metre from any other vehicle, except a motorcycle without a trailer, or a bicycle parked in accordance with this Local Law; and

(e) so that it does not obstruct any vehicle on the carriageway

unless otherwise indicated on a parking regulation sign or markings on the roadway.

(2) In this clause, 'continuous dividing line' means –

(a) a single continuous dividing line only;

(b) a single continuous dividing line to the left or right of a broken dividing line; or

(c) 2 parallel continuous dividing lines.

30. When parallel and right-angled parking apply

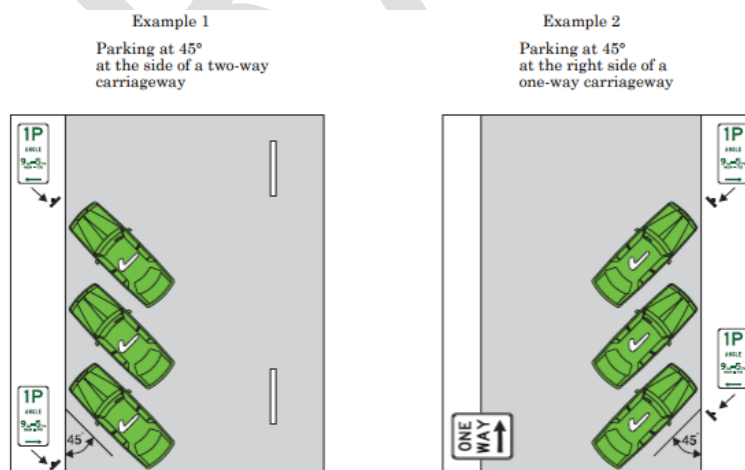
Where a traffic sign associated with a parking area is not inscribed with the words 'angle parking' (or with an equivalent symbol depicting this purpose), then unless a sign associated with the parking area indicates, or marks on the carriageway indicate, that vehicles have to park in a different position, where the parking area is:

(a) adjacent to the boundary of a carriageway, a person parking a vehicle in the parking area shall park it as near as practicable to and parallel with that boundary; and

(b) at or near the centre of the carriageway, a person parking a vehicle in that parking area shall park it at approximately right angles to the centre of the carriageway.

31. When angle parking applies

(1) Subject to sub-clause (2), where a sign associated with a parking area is inscribed with the words 'angle parking' (or with an equivalent symbol depicting this purpose), a person parking a vehicle in the area shall park the vehicle at an angle of approximately 45 degrees to the centre of the carriageway unless otherwise indicated by the inscription on the parking sign or by marks on the carriageway.



(2) This clause does not apply to:

(a) a passenger vehicle or a commercial vehicle with a mass including any load, of over three tonnes; or

(b) a person parking either a motorcycle without a trailer, or a bicycle.

32. Parking Near Fire Hydrant or Public Post Box

- (1) A person shall not stop or park a vehicle on a thoroughfare so that any portion of the vehicle is within 1 metre of a fire hydrant or fire plug, or of any sign or mark indicating the existence of a fire hydrant or fire plug.
- (2) A person shall not stop or park a vehicle on a thoroughfare so that any portion of the vehicle is within:
 - (a) 3 metres of a public post box; or
 - (b) within a mail zone,

unless the vehicle is being used for the purpose of collecting postal articles from the post box.

33. Parking In a Clearway

- (1) A person shall not stop or park a vehicle, unless a public bus, on a thoroughfare so that any portion of the vehicle is within a clearway zone.

Clearway sign
(background to C in red)



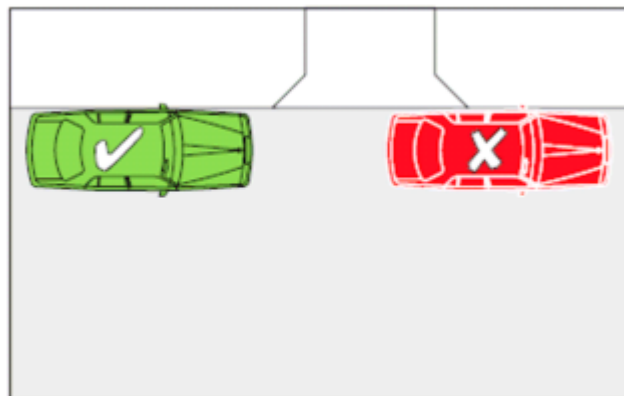
End clearway sign
(background to C in red)



34. Traffic Obstructions

Subject to any law relating to intersections with traffic control signals, a person shall not stop or park a vehicle so that any portion of the vehicle is;

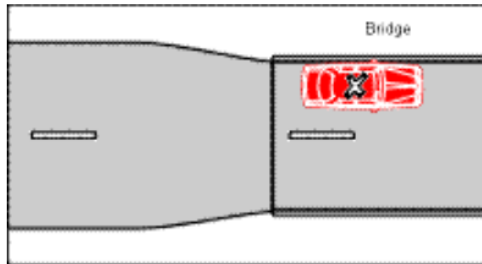
- (1) in front of a right of way, crossover, passage or driveway, or so close to one as to deny vehicles reasonable access to, or egress from, the right of way, crossover, passage or private driveway;



The vehicle marked with an "x" is stopped in contravention of clause 34(1)

- (2) upon an intersection, except adjacent to a carriageway boundary that is not broken by an intersecting carriageway;
- (3) within 10 metres of the nearest property line of any thoroughfare intersecting the thoroughfare on the side on which the vehicle is parked;
- (4) alongside any excavation, works, hoarding, scaffolding or obstruction on the carriageway, if the vehicle would obstruct traffic;
- (5) in a cul-de-sac so as to obstruct the turning of vehicles within the cul-de-sac;

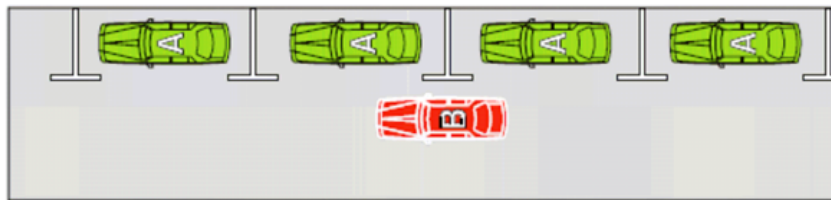
- (6) on or over any part of a footpath or a place of refuge for pedestrians. unless a sign or markings on the carriageway indicate otherwise;
- (7) on or over any part of a footpath or a place of refuge for pedestrians within a school zone unless a sign or markings on the carriageway indicate otherwise; or
- (8) Bridges



In the example, the vehicle is stopped in contravention of clause 33(8)

35. Double Parking

- (1) A person shall not stop or park a vehicle on a thoroughfare so that any portion of the vehicle is between any other stopped or parked vehicle and the centre of that thoroughfare.



Example of Double Parking

- (2) This clause does not apply to a driver stopped in traffic.

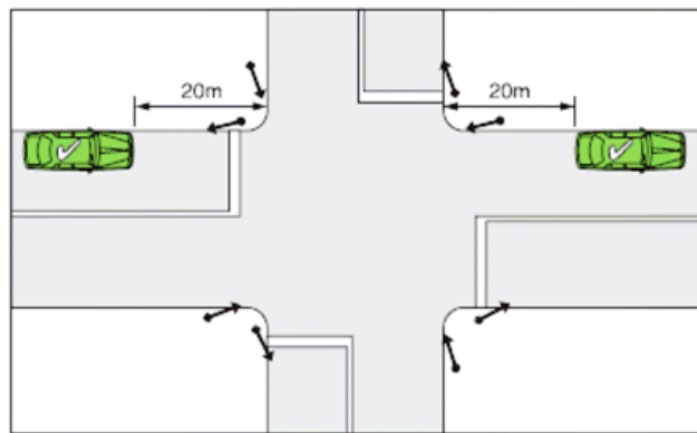
36. Verge Parking

- (1) A person shall not stop or park a vehicle on a verge where signs prohibit the stopping or parking of vehicles on that verge.
- (2) A person shall not park a vehicle on a verge for a period longer than 24 hours.
- (3) A person shall not park a trailer or caravan on a verge unless it is attached to another vehicle capable of towing that trailer or caravan.
- (4) A person, not being the owner or the occupier of the land abutting on to a verge, shall not, without consent of that owner or occupier, drive, park or stop a vehicle upon that verge.
- (5) A person shall not park a commercial vehicle on a verge unless it is being loaded or unloaded with reasonable expedition with goods, merchandise or materials collected from, or delivered to, the premises adjacent to the portion of the verge on which the commercial vehicle is parked, provided no obstruction is caused to the passage of any vehicle or person using a carriageway or a path.

37. Bus Stops, Intersections, Pedestrian, Railway and Children's Crossing

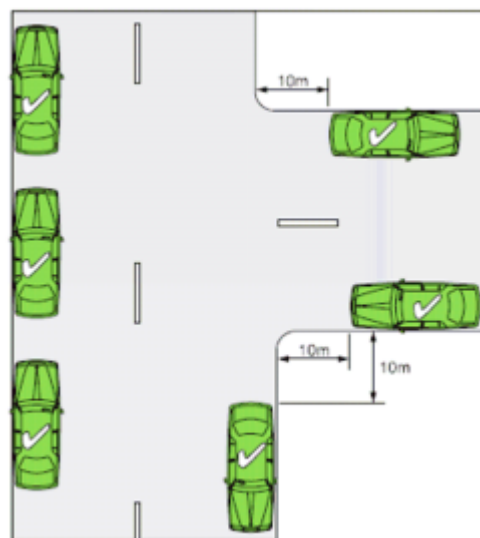
- (1) A person shall not stop or park a vehicle on a thoroughfare so that any portion of the vehicle is within 10 metres of the departure side of –
 - (a) a sign inscribed with the words “Bus Stop” or “Hail Bus Here” (or with equivalent symbols depicting these purposes), unless that vehicle is a bus taking up or setting down passengers; or

- (b) a pedestrian crossing or a children’s crossing established on a thoroughfare.
- (2) A person shall not stop or park a vehicle on a thoroughfare so that any portion of the vehicle is within 20 metres of the approach side of –
- (a) a sign inscribed with the words “Bus Stop” or “Hail Bus Here” (or with equivalent symbols depicting these purposes), unless that vehicle is a bus taking up or setting down passengers; or
 - (b) a pedestrian crossing or a children’s crossing established on a thoroughfare; or
- (3) Unless a sign indicates otherwise, a person shall not stop a vehicle so that any portion of the vehicle is—
- (a) within 20 metres from the nearest point of an intersecting carriageway at an intersection with traffic-control signals;



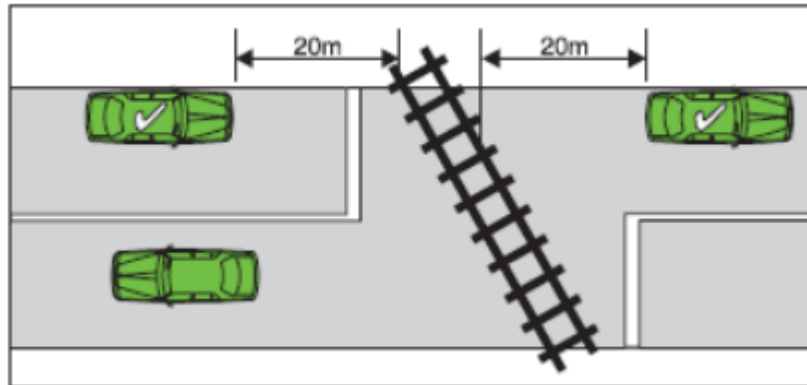
Example of measurement of distance—intersection with traffic control signals

- (b) within 10 metres of the prolongation of the nearer edge of any intersecting carriageway (without traffic-control signals) intersecting that carriageway on the side on which the vehicle is stopped, unless the person stops, if the intersection is a T-intersection—along the continuous side of the continuing road at the intersection;



Example of measurement of distance—T-intersection without traffic lights

- (4) A driver shall not stop in a bus zone unless the driver is driving a public bus, or a bus of a type that is permitted to stop at the bus zone by information on or with the 'bus zone' sign, applying to the bus zone.
- (5) A person shall not park a vehicle so that any portion of the vehicle is within 20 metres of either the approach side or the departure side of the nearest rail of a railway level crossing.



Example of measurement of distance—level crossing

38. No Parking within One Hour

If a person parks a vehicle in a thoroughfare where parking is restricted as to time, that person shall not park that vehicle again in the same thoroughfare on that same day unless it has first been removed from the thoroughfare for at least 1 hour.

39. Direction to Move Vehicles

A driver of a vehicle shall not permit a vehicle to stop or park on any part of a thoroughfare or public reserve, if an authorised person directs the driver to move it regardless of signage in place.

40. Stopping in a Loading Zone

A person shall not stop a vehicle in a loading zone unless it is:

- (a) a motor vehicle used for commercial or trade purposes engaged in the picking up or setting down of goods; or
 - (b) a motor vehicle taking up or setting down passengers,
- but, in any event, shall not remain in that loading zone
- (c) for longer than a time indicated on the 'loading zone' sign; or
 - (d) longer than 30 minutes (if no time is indicated on the sign).

41. Stopping in a taxi zone

A driver shall not stop in a taxi zone, unless the driver is driving a taxi or a appropriately signed on-demand transport (rideshare) vehicle undertaking fee for service passenger collection or drop-off activities.

42. No parking of vehicles exposed for sale and in other circumstances

A person shall not park a vehicle on any portion of a thoroughfare:

- (a) for the purpose of exposing it for sale;
- (b) if that vehicle is not licensed under the Road Traffic Act;
- (c) if that vehicle is a trailer or a caravan unattached to a motor vehicle; or
- (d) for the purpose of effecting repairs to it, other than the minimum repairs necessary to enable the vehicle to be moved to a place other than a thoroughfare.

PART 4 – STOPPING AND PARKING GENERALLY

43. Parking and Stopping of Bicycles

A person shall not park or stop any bicycle in a parking space, unless the parking space is marked "M/C".

44. Authorised Parking

A person shall not, without the permission of the local government or an authorised person, stop or park a vehicle, other than an authorised vehicle, in an area designated by signs for the parking of authorised vehicles only.

45. Private Property

(1) In this clause, a reference to "land" does not include land which is –

- (a) a public reserve;
 - (b) the subject of an agreement referred to in clause 5(2); or
 - (c) a parking station.
- (2) A person shall not park a vehicle on land without the consent of the owner or occupier of the land on which the vehicle is parked.
- (3) The consent referred to in sub-clause (2) may be given subject to any conditions which are specified on a sign, and a person shall not park a vehicle on the land otherwise than in accordance with the consent.

46. Stopping heavy, commercial and other types of vehicles in built up area

(1) A person shall not park—

- (a) a vehicle or any combination of vehicles that, together with any projection on, or load carried by, the vehicle or combination of vehicles, is 7.5m or more in length or exceeds a GVM of 4.5 t;
- (b) a commercial vehicle;
- (c) a caravan;
- (d) a bus;
- (e) a tow truck;
- (f) a tractor; or
- (g) a trailer.

on a carriageway or verge in a built-up area between the hours of 6.00 pm one day and 7.00 am the following day and for more than three hours consecutively between the hours of 7.00 am and 6.00 pm.

(2) Nothing in this clause mitigates the limitations or conditions imposed by any other clause or by any Local Law or traffic sign relating to the parking or stopping of vehicles.

47. Marking of Tyres

- (1) An authorised person may mark the tyres of a parked vehicle with chalk or any other non-indelible substance or technology for any purpose connected with or arising out of that authorised person's duties and powers.
- (2) A person shall not remove a mark made by an authorised person so the purpose of the affixing of such mark is defeated or likely to be defeated.

48. Parking on Public Reserves

A person shall not stop or park a vehicle in a public reserve, other than within a parking facility or parking station on that reserve, unless the person is an employee of the City in the course of her or his duties or has obtained the permission of the local government or an authorised person.

49. No Obstruction of Public Places

(1) A person shall not park a vehicle in a public place so as to cause an obstruction.

(2) For the purposes of sub-clause (1):

(a) a vehicle which is parked in any portion of a public place where vehicles may not lawfully be parked is deemed to be causing an obstruction;

(b) a vehicle that is parked in any portion of a public place where vehicles may lawfully be parked does not cause an obstruction, unless –

(i) the vehicle is so parked for any period exceeding 24 hours, without the consent in writing of the CEO or an authorised person; or

(ii) the vehicle is so parked during any period in which the parking of vehicles is prohibited or restricted by a sign.

50. Impounding of Vehicles

The impounding of vehicles and other goods shall be carried out in accordance with sections 3.37 to 3.48 of the Act and regulation 29 of the *Local Government (Functions and General) Regulations 1996*.

51. Stopping in a Parking Area for People with Disabilities

(1) A driver shall not stop in a parking area for people with disabilities unless:

(a) the driver's vehicle displays an ACROD sticker; and

(b) either the driver or a passenger in that vehicle is a person with disabilities.

(2) In this clause a 'parking area for people with disabilities' is a length or area:

(a) to which a 'permissive parking' sign displaying a people with disabilities symbol applies;

(b) to which a 'people with disabilities parking' sign applies;

(c) indicated by a 'people with disabilities' road marking that consists of, or includes, a 'people with disabilities' symbol; or

(d) an area set aside within a parking region as a 'parking bay for use of a disabled person' under the Local Government (Parking for People with Disabilities) Regulations 2014

52. Restrictions on parking in particular areas

A person shall not park a vehicle:

(a) in a no parking area;

(b) in a parking area, except in accordance with both the signs associated with the parking area and with this Local Law;

(c) in a space marked 'M/C' unless it is a motorcycle without a sidecar or a trailer, or it is a bicycle.

PART 5 – RESIDENTIAL PARKING PERMITS

53. Residential Parking Permit

- (1) A maximum of three (3) residential parking permits may be issued for each residential lot fronting, or with vehicle access to and from, the thoroughfare.
- (2) An application for a parking permit shall be made in the form determined by the local government.
- (3) The local government may in respect of an application for a permit for the purpose of sub-clause (1):
 - (a) approve it;
 - (b) approve it, subject to such conditions as the local government considers appropriate; or
 - (c) refuse to approve it.
- (4) Where the local government makes a decision under sub-clause (3), it shall issue a permit in the form determined by it to the person who applied for the permit.
- (5) A permit issued for the purpose of sub-clause (1) will be issued for a period not exceeding one (1) year and will expire on the 1st of July of each year.
- (6) Every permit issued for the purpose of sub-clause (1) is to specify:
 - (a) a permit number;
 - (b) Vehicle registration number plate of the permitted vehicle; and
 - (c) the name of the thoroughfare to which the exemption granted by clause 53 applies.

54. Conditions of Exemption for Residential Parking Permits

Where parking of a vehicle on any part of a thoroughfare within the district is prohibited for more than a specified time, the holder of a permit issued under clause 53 is exempted from such prohibitions if:

- (1) The vehicle is parked on a thoroughfare or portion of a thoroughfare specified in the permit, but not adjacent to retail premises where the parking of all vehicles is subject to a time restriction;
- (2) The permit is displayed in the vehicle in a prominent position;
- (3) The period in respect of which the permit was issued has not expired; and
- (4) The holder of the permit at the time of parking the vehicle still resides at the residential lot in respect of which the permit was issued.

55. Removal and cancellation of residential parking permit

The holder of a permit issued under clause 53 who changes residence shall remove the permit from the vehicle to which it is affixed, and the permit shall be deemed to be cancelled on and from the date the holder changes residence.

PART 6 – METERED ZONES

56. Determination of metered zones

- (1) The local government may by resolution constitute, determine and vary and also indicate by signs, metered spaces and metered zones.
- (2) In respect of metered spaces and metered zones the local government may by resolution determine, and may indicate by signs;
 - (a) permitted times and conditions of parking depending on and varying with the locality;
 - (b) classes of vehicles which are permitted to park;
 - (c) the amount payable for parking; and
 - (d) the manner of parking.

57. Parking fee to be paid

Subject to clause 60, a person shall not park a vehicle in a metered space unless the appropriate fee as indicated by a sign on the parking meter referable to the space is inserted into the parking meter.

58. Limitation on parking in metered space

The payment of a fee under clause 56 shall entitle a person to park the vehicle in a metered space for the period shown on the parking meter, but does not authorise the parking of the vehicle during any time when parking in that space may be prohibited in accordance with this Local Law.

59. No parking when meter is expired

Subject to clause 60 a person shall not leave or permit a vehicle to remain parked in a metered space, during the hours when a fee is payable to park the vehicle in the space when the parking meter referable to that space exhibits the sign 'Expired' or a negative time.

60. Suspension of requirement to pay fee

The local government may by resolution declare that the provisions of clauses 57 and 59 shall not apply during the periods and days specified in the resolution.

61. Vehicles to be within metered space

- (1) A person shall not park a vehicle in a metered space in a thoroughfare otherwise than parallel to and as close to the kerb as practicable and wholly within the space, provided that where a metered space is set out otherwise than parallel to the kerb the vehicle need only park wholly within the space.
- (2) A person shall not stop or park a vehicle, other than wholly within a parking space.
- (3) A person shall not park a vehicle partly within and partly outside a metered space.

62. Permitted insertions in parking meters

- (1) A person shall not insert into a parking meter anything other than the designations of coin or banknote or such other permitted form of payment indicated by a sign on the parking meter.
- (2) The insertion of a coin or banknote into any parking meter or the making of payment in such other form as may be permitted, shall be effected only in accordance with the instructions printed on that particular meter.

63. Parking ticket to be clearly visible

A driver of a vehicle left parked in a metered zone which is regulated by a ticket issuing machine shall on purchasing a ticket from the machine for a period of parking, place the ticket inside the vehicle in such a position that the ticket is clearly visible to and the expiry time or time for which the ticket remains valid is able to be read by an Authorised Person examining the ticket from outside the vehicle.

64. One vehicle per metered space

A person shall not park or attempt to park a vehicle in a metered space in which another vehicle is parked.

65. No parking when hood on meter

Notwithstanding any other provision of this Local Law and notwithstanding any other sign or notice, a person shall not park a vehicle in a metered space if the parking meter referable to such metered space has a hood marked 'No Parking', 'Reserved Parking' or 'Temporary Bus Stand' or equivalent symbols depicting these purposes, except with the permission of the local government or an Authorised Person.

PART 7 – ELECTRIC RIDEABLE DEVICE

66. Electric Rideable Device Areas

(1) The Local Government may by resolution determine Electric Rideable Device Areas.

(2) A person shall not park an electric rideable device on a footpath unless the footpath is located within an Electric Rideable Device Area determined under clause 66(1).

67. Electric Rideable Device Parking

(1) The local government may by resolution constitute, determine and vary and also indicate by signs areas outside of an Electric Rideable Device Area where electric rideable devices may be parked.

(2) A person shall not park an electric rideable device anywhere outside of an Electric Rideable Device Area unless:

(a) the electric rideable device is parked in an area constituted, determined or varied under clause 67(1) of this Local Law; and

(b) the electric rideable device is parked in accordance with any sign referable to that area.

PART 8 – MISCELLANEOUS

68. Affixing Signs and Notices

A person shall not without the permission of the local government–

- (a) affix any board, sign, placard, notice or other thing to or paint or write upon any part of a sign, ticket issuing machine, parking facility, metered zone or parking station; or
- (b) place, mark or erect a sign purporting to be or resembling a sign placed, marked or erected by the local government under this Local Law.

69. Impersonation of Authorised Person

A person who is not an authorised person shall not in any way assume or purport to assume the duties of an authorised person.

70. No Contravention of Sign

A person shall not contravene the direction of a sign erected by the local government under this Local Law.

71. Removal of Notice from Vehicle

A person other than the driver of the vehicle or a person acting under the direction of the driver, shall not remove from that vehicle any notice affixed to or put on it by an Authorised Person under this Local Law.

72. Offence

Any person who contravenes or fails to comply with a provision of this Local Law commits an offence and is liable upon conviction to a penalty not exceeding \$5,000, and if the offence is of a continuing nature, to an additional penalty not exceeding \$500 for each day, or part of a day, during which the offence has continued.

73. Prescribed Offences and Modified Penalties

- (1) An offence against a clause specified in Schedule 1 is a prescribed offence for the purposes of section 9.16(1) of the Act.
- (2) The amount of the modified penalty for a prescribed offence is that specified in Column 4 of Schedule 1 adjacent to the clause.

74. Forms

For the purposes of this Local Law –

- (a) the form of the notice referred to in section 9.13 of the Act is that of Form 1 in Schedule 2;
- (b) the form of the infringement notice referred to in section 9.17 of the Act is that of Form 2 in Schedule 2;
- (c) the form of the infringement notice referred to in section 9.17 of the Act which incorporates the notice referred to in section 9.13 of the Act, is that of Form 3 in Schedule 2; and
- (d) the form of the notice referred to in section 9.20 of the Act is that of Form 4 in Schedule 2.

75. Special Purpose and Emergency Vehicles

Notwithstanding anything to the contrary in this Local Law, the driver of –

- (a) a special purpose vehicle; or
- (b) an emergency vehicle

may, in the course of their duties and when it is expedient and safe to do so, stop or park the vehicle in any place at any time.

SCHEDULE 1 – Schedule of Penalties

Local Government Act 1995

City of Cockburn Parking Local Law 2023

Modified Penalties

Item	Clause	Nature of Offence	Modified Penalty \$
1.	12	Failing to display unexpired parking ticket in a parking station	100
2.	14	A person shall not remove a vehicle which has been parked in a parking station until the appropriate fee is paid.	100
3.	15 (1)	Parking outside a parking space in a parking station.	100
4.	15(2)	Parking against the flow of traffic in a parking station	100
5.	16(1)(a)	Stopping in a no stopping area in a parking station	100
6.	16(1)(b)	Stopping during a prohibited period in part of a parking station	100
7.	16(2)(a)	Parking in a no parking area in a parking station	100
8.	16(2)(b)	Parking during a prohibited period on part of a parking station.	100
9.	16(2)(c)	Parking in a parking station space set aside for a different class of vehicle or driver.	100
10.	16(2)(d)	Parking for more than the maximum period in a parking station	100
11.	16(2)(e)	Parking so as to obstruct an entrance, exit or access way within a parking station	100
12.	17(2)	Stopping without a ticket in a parking space set aside for a special event	100
13.	18(a)	A person shall not remain in or on a parking station after directed to leave by an authorised person	100
14.	18(b)	Parking a vehicle in a parking station after being directed to remove the vehicle by an authorised officer	100
15.	18(c)	Driving a vehicle in a parking station in a direction contrary to sign and/or road markings	100
16.	18(d)	Conducting business activity in a parking station without written authorisation	100
17.	18(e)	Sleeping in a vehicle in a parking station	100
18.	18 (f)	Intentionally cause a vehicle's tyres to lose traction, causing a vehicle to make excessive noise or smoke.	500
19.	20	Busking, sell, hire, give away, offer or expose for sale or hire without written permission within a parking station.	100
20.	21(3)	Parking in an authorised parking space in a parking station without a permit	100
21.	22	A person shall not remove, damage, deface, misuse or interfere with any part of a parking station or parking facility, or attempt to do so	500
22.	23(1)	Operate or attempt to operate a ticket issuing machine contrary to its normal operational instructions	500
23.	23(2)	Inserting or attempting to insert money or payment that is inappropriate for a ticket issuing machine	500
24.	24 (1-4)	A person shall not interfere with, remove, damage, deface, misuse or obstruct any parking or vehicle charging infrastructure in any place.	500
25.	25	Displaying an altered, damaged, defaced or modified ticket from a ticket issuing machine.	100
26.	26(1)(a)	Stopping or parking on part of a thoroughfare set aside for vehicles of a different class	100

27.	26(1)(b)	Stopping or parking on part of a thoroughfare set aside for drivers of a different class	100
28.	26(1)(c)	Stopping or parking on part of a thoroughfare during a prohibited period	100
29.	26(1)(d)	Stopping or parking on part of a thoroughfare to which a 'no stopping' sign applies	100
30.	26(1)(e)	Stopping or parking on part of a thoroughfare to which a 'no parking' sign applies	100
31.	26(1)(f)	Stopping or parking on part of a thoroughfare marked with a yellow line	100
32.	26(1)(g)	Parking on a thoroughfare other than wholly within a marked parking space	100
33.	26(2)	Parking on a thoroughfare for more than specified maximum time	100
34.	27	Stopping or parking in an occupied parking space	100
35.	28	Stopping or parking on or adjacent to a median strip (otherwise than in a parking space), on a painted island or within 9.0 metres of any portion of a carriageway bounded on one or both sides by a traffic island.	100
36.	29(1)(a)	Failure to park as near as practicable to and parallel with the left boundary of two-way carriageway against flow of traffic on carriageway	100
37.	29(1)(b)	Failure to park as near as practicable to and parallel with boundary of one-way carriageway	100
39.	29(1)(c)	Parking when distance from farther boundary less than 3 metres	100
40.	29(1)(d)	Parking closer than 1 metre from another vehicle	100
41.	29(1)(e)	Causing obstruction on carriageway	100
42.	30(b)	Failure to park at approximate right angle	100
43.	31(1)	Failure to park at an appropriate angle	100
44.	32(1)	Stopping or parking within 1 metre of a fire hydrant, sign or mark.	100
45.	32(2)	Stopping or parking within 3 metres of a public post box or within a mail zone	100
46.	33(1)	Stopping or parking on a thoroughfare in a clearway.	100
47.	34(1)	Stopping or parking in front of a driveway or right of way	100
48.	34(2)	Parking on an intersection	100
49.	34(3)	Parking within 10 metres of intersection	100
50.	34(4)	Parking next to traffic obstruction	100
51.	34(5)	Parking in a cul-de-sac so as to cause an obstruction	100
52.	34(6)	Parking or stopping over a footpath	100
53.	34(7)	Parking or stopping over a footpath within a school zone	200
54.	34(8)	Parking on a bridge	100
55.	35	Double parking	100
56.	36(1)	Stopping or parking on a verge contrary to signs	200
57.	36(2)	Parking a vehicle on a verge for longer than 24hrs	100
58.	36(3)	Parking a trailer or caravan on a verge without being attached to another vehicle	100
59.	36(4)	Driving, stopping, or parking a vehicle on a verge without consent	100
60.	36(5)	Parking a commercial vehicle on a verge for purposes other than loading or unloading goods	100
61.	37(1)	Stopping or parking within 10 metres of the departure side of bus stop, pedestrian or children's crossings	100
62.	37(2)	Stopping or parking within 20 metres of the approach side of bus stop, pedestrian or children's crossing	100
63.	37(3)(a)	Stopping or parking within 20 metres of an intersection with traffic control signals	100
64.	37(3)(b)	Stopping or parking within 10 metres of an intersection without traffic control signals	100
65.	37(4)	Stopping in bus zone	100

66.	37(5)	Parking vehicle within 20 metres of approach side or departure side of railway level crossing	100
67.	38	Parking vehicle again within 1 hour on a thoroughfare	100
68.	39	Failing to move vehicle after direction by authorised person	100
69.	40	Stopping in a loading zone	100
70.	41	Stopping in a taxi zone	100
71.	42(a)	Parking on a thoroughfare for purpose of sale	200
72.	42(b)	Parking an unregistered vehicle on a thoroughfare	200
73.	42(c)	Parking an unattached caravan or trailer on a thoroughfare	200
74.	42(d)	Unattached trailer or caravan on a thoroughfare	200
75.	43	Stopping or parking a bicycle in a parking space	100
76.	44	Parking in authorised parking area without authorisation	100
77.	45(2)	Parking on private property without consent of owner	100
78.	46	Parking a heavy, commercial, or other type of vehicle on road or verge	100
79.	47(2)	Removing authorised mark from tyres of parked vehicle	100
80.	48	Stopping or parking a vehicle on a public reserve without authorisation	100
81.	49	Parking so as to cause an obstruction in public place	200
82.	51	Stopping in a Parking Area for People with Disabilities	500
83.	52(a)	Parking in a no parking area	100
84.	52(b)	Parking in a parking area otherwise than in accordance with signs	100
85.	52(c)	Parking in a motorcycle space	100
86.	55	Failure to remove permit when residence changed	100
87.	57	Failure to pay fee for metered space	100
88.	59	Parking when meter has expired	100
89.	61(1)	Failure to park wholly within metered space	100
90.	61(3)	Parking outside metered zone	100
91.	62	Non-permitted insertion in parking meter	100
92.	63	Failure to display ticket clearly in metered zone	100
93.	64	Parking or attempting to park a vehicle in a metered space occupied by another vehicle	100
94.	65	Parking contrary to a meter hood	100
95.	66(2)	Parking an electric rideable vehicle on a footpath outside of an electric rideable device area	100
96.	67(2)	Parking an electric rideable vehicle contrary to signs	100
97.		All other offences not specified	100

SCHEDULE 2 – Form 1 - Notice to Owner of Vehicle Involved in Offence

LOCAL GOVERNMENT ACT 1995

PARKING LOCAL LAW 2023

Date / /

To: (1)

of: (2)

It is alleged that on / / at (3)

at (4).....your vehicle:

make.....;

model.....;

registration.....;

was involved in the commission of the following offence-.....

.....
.....
.....

contrary to clause.....of the **City of Cockburn Parking Local Law 2023**.

You are required under section 9.13 of the Local Government Act 1995 to identify the person who was the driver or person in charge of the vehicle at the time when the offence is alleged to have been committed.

If you do not prove otherwise, you will be deemed to have committed the offence unless:
within 28 days after being served with this notice;

1. you inform the Chief Executive Officer or another authorised officer of the local government as to the identity and address of the person who was the driver or person in charge of the vehicle at the time the offence is alleged to have been committed;
2. you satisfy the Chief Executive Officer that the vehicle had been stolen, or was being unlawfully used, at the time the offence is alleged to have been committed; or
3. you were given an infringement notice for the alleged offence and the modified penalty specified in it is paid within 28 days after the notice was given or such further time as is allowed.

Insert:

Name of owner or 'the owner'

Address of owner (not required if owner not named)

Time of alleged offence

Location of alleged offence

Signature of authorised person

Name and title of authorised person giving notice

SCHEDULE 2 – Form 2 - Infringement Notice

LOCAL GOVERNMENT ACT 1995

PARKING LOCAL LAW 2023

Serial No

Date / /

To: (1)

of: (2)

It is alleged that on / / at (3)

at (4)

in respect of vehicle:

make

model.....

registration.....

you committed the following offence:

.....

.....

.....

contrary to clause.....of the **City of Cockburn Parking Local Law 2023**.

The modified penalty for the offence is \$

If you do not wish to have a complaint of the alleged offence heard and determined by a court, the amount of the modified penalty may be paid to an authorised person at (5)within a period of 28 days after the giving of this notice.

If you take no action this infringement notice may be registered with the Fines Enforcement Registry after which your driver's licence or any vehicle licence held by you may be suspended. If the matter is registered with the Registry additional costs will also be payable.

If the above address is not your current address, or if you change your address, it is important that you advise us immediately. Failure to do so may result in your driver's licence or any vehicle licence you hold being suspended without your knowledge.

(6)

(7)

Insert:

- (1) Name of alleged offender or 'the owner'
- (2) Address of alleged offender
- (3) Time of alleged offence
- (4) Location of alleged offence
- (5) Place where modified penalty may be paid
- (6) Signature of authorised person
- (7) Name and title of authorised person giving notice

SCHEDULE 2 – Form 3 – Infringement Notices

LOCAL GOVERNMENT ACT 1995

PARKING LOCAL LAW 2023

Serial No

Date / /

To: (1)

of: (2)

It is alleged that on / / at (3)

at (4)

in respect of vehicle:

make.....;

model.....;

registration.....;

you committed the following offence:

.....

.....

.....

contrary to clauseof the **City of Cockburn Parking and Parking Facilities Local Law**.

The modified penalty for the offence is \$

If you do not wish to have a complaint of the alleged offence heard and determined by a court, the amount of the modified penalty may be paid to an authorized person at (5).....within a period of 28 days after the giving of this notice.

Unless within 28 days after being served with this notice:

(a) you pay the modified penalty; or

(b) you:

(i) inform the Chief Executive Officer or another authorized officer of the local government as to the identity and address of the person who was the driver or person in charge of the above vehicle at the time the offence is alleged to have been committed; or

(ii) satisfy the Chief Executive Officer that the above vehicle had been stolen or was being unlawfully used at the time the offence is alleged to have been committed,

you will, in the absence of proof to the contrary, be deemed to have committed the above offence and court proceedings may be instituted against you.

If you take no action this infringement notice may be registered with the Fines Enforcement Registry after which your driver's licence or any vehicle licence held by you may be suspended. If the matter is registered with the Registry additional costs will also be payable.

If the above address is not your current address, or if you change your address, it is important that you advise us immediately. Failure to do so may result in your driver's licence or any vehicle licence you hold being suspended without your knowledge.

(6)

(7)

Insert:

- (1) Name of owner or 'the owner'
- (2) Address of owner (not required if owner not named)
- (3) Time of alleged offence
- (4) Location of alleged offence
- (5) Place where modified penalty may be paid
- (6) Signature of authorized person
- (7) Name and title of authorized person giving notice

SCHEDULE 2 – Form 4 - Withdrawal of Infringement Notice

LOCAL GOVERNMENT ACT 1995

PARKING LOCAL LAW 2023

Serial No

Date / /

To: (1)
of: (2)

Infringement Notice No. dated / /

in respect of vehicle:

make.....,

model.....,

registration.....,

for the alleged offence of

.....

.....

has been withdrawn.

The modified penalty of \$

- has been paid and a refund is enclosed.
- has not been paid and should not be paid.
(delete as appropriate).

(3)

(4)

Insert:

(1) Name of alleged offender to whom infringement notice was given or 'the owner'.

(2) Address of alleged offender.

(3) Signature of authorised person

(4) Name and title of authorised person giving notice

The Common Seal of the City of Cockburn was affixed by authority of a resolution of the Council of the City of Cockburn in the presence of:

Mayor

Chief Executive Officer

DRAFT